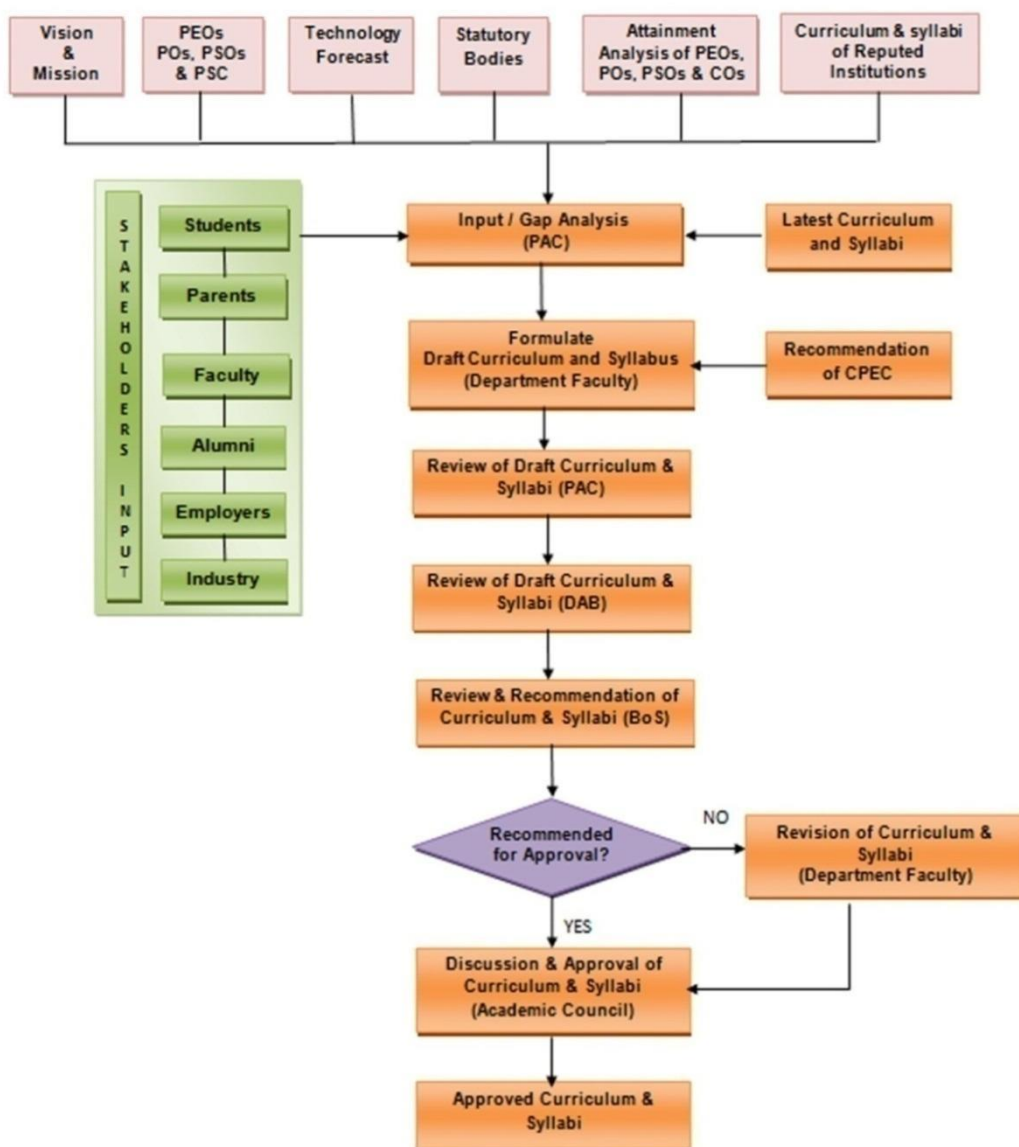




CRITERION 1 Curricular Aspects	1.4 Feedback System
<i>1.4.1 Structured feedback and review of the syllabus (semester-wise / year-wise) is obtained from 1) Students 2) Teachers 3) Employers and 4) Alumni</i>	

### Feedback Mechanism for framing Curriculum

The steps involved in the process of curriculum design in our institute are as shown in the Figure.



### Process for Defining the Program Curriculum

## **1. Input/Gap Analysis by PAC**

The Program Assessment Committee (PAC) of the Program identifies the gap in the latest curriculum and syllabi based on the following factors to draft the curriculum and syllabi.

- a. Vision and Mission statements of the Department, PEOs, POs, PSOs.
- b. Program Specific Criteria (PSC) of the relevant International Professional Society of the program.
- c. Guidelines from statutory bodies.
- d. Technology forecast by the national level industrial organizations/associations.
- e. Attainment analysis of the POs, COs and PSOs of previous batches.
- f. Stakeholders' Input (Feedbacks of Employer, Alumni, Faculty, Student, Parent).

### **Input from Stakeholders:**

The stakeholders' input is considered as the one of the main factors in the design of curriculum and syllabi. The feedback is obtained from the stakeholders whenever changes are planned in the curriculum and syllabi.

### **Feedback from Employers**

The feedback from employers are obtained to assess the suitability of the curriculum and syllabi for the employment opportunities and to update/modify the curriculum as per the need of the industries.

### **Feedback from Alumni**

Alumni members are invited to offer their suggestions on curriculum and syllabi through feedback forms or E-mails. The suggestions are analyzed and are incorporated into the curriculum and syllabi if necessary.

### **Feedback from Faculty members**

Faculty members provide their feedback on the courses they taught. They suggest the new topics to be introduced and its relevance as well as the obsolete topics to be deleted or modified and the reasons thereof with respect to the courses. They also provide suggestions for the introduction of new courses in the curriculum.

### **Feedback from Students**

The students are given feedback form and asked to register their feedbacks for the inclusion and deletion of topics or courses in the curriculum and syllabi. The

---

students' suggestions are reviewed in PAC and necessary changes are made in the curriculum based on the need assessment.

### **Feedback from Parent**

The parents are contacted and asked to register their suggestions for the updation of curriculum and syllabi.

## **2. Formulation of Draft Curriculum and Syllabi**

The faculty members of the Department scrupulously plan for effective design and development of curriculum. The outcome of Input/Gap analysis done by PAC is used for drafting the curriculum and syllabi.

## **3. Review of Draft Curriculum and Syllabi by PAC**

The draft curriculum and syllabi designed by the Department faculty are reviewed by the Program Assessment Committee (PAC).

## **4. Review of Draft Curriculum and Syllabi by DAB**

The draft curriculum and syllabi are placed before the Department Advisory Board and the suggestions given by the members are considered for review of the curriculum and syllabi.

## **5. Review and Recommendation of Curriculum and Syllabi by Board of Studies**

The final draft syllabus prepared by the Department is placed before the BoS and it is reviewed extensively. Suggestions given by the board is incorporated in the curriculum and syllabi. The BoS recommends the curriculum and syllabi to the Academic Council for approval.

## **6. Approval of Curriculum and Syllabi**

The curriculum and syllabi recommended by various BoS are placed before the Council. After careful scrutiny, the Academic Council approves the curriculum & syllabi and Academic regulations with necessary modifications and suggestions.

The suggestions and modifications given by the Academic Council are scrupulously carried out and the approved syllabi are followed in the corresponding batches of UG/PG programs. The approved curriculum & syllabi and Academic regulations are also submitted to the affiliating University.

# Stakeholders' Feedback and Suggestion forms used for Curriculum Design Process



# SETHU INSTITUTE OF TECHNOLOGY

Pulloor, Kariapatti – 626 115

(An Autonomous Institution | Accredited by **NAAC** with 'A' Grade)

(Approved by AICTE, New Delhi and affiliated to Anna University, Chennai)

## FEEDBACK ON CURRICULAR ASPECTS NEED ANALYSIS QUESTIONNAIRE

It is proposed to include a course on ( \_\_\_\_\_ ) in the curriculum. Please give your feedback about this course.

1. Do you feel this course will be useful? Yes/No

---

---

---

2. In your opinion, what are the benefits in learning this course?

---

---

---

3. Could you suggest some topics that could be included in this course?

---

---

---

4. What is the right level for learning this course? I/II/III/IV Year

5. Would like to offer any other suggestions regarding this course?

**CATEGORY: Student/Alumni/Faculty/Employer**

**NAME:**

**POSITION/TITLE:**

**OFFICIAL ADDRESS:**

**SIGNATURE**



# SETHU INSTITUTE OF TECHNOLOGY

Pulloor, Kariapatti – 626 115

(An Autonomous Institution | Accredited by NAAC with 'A' Grade)

(Approved by AICTE, New Delhi and affiliated to Anna University, Chennai)

## FEEDBACK ON CURRICULAR ASPECTS SUGGESTION FORM

Please refer to the (**Autonomous R2015**) Curriculum and Syllabi of **B.E.Computer Science and Engineering** and offer your suggestions for improvement.

- Relevance of the courses in relation to the programme
- Sufficiency of the courses related to industries that are relevant to meet the Industrial needs
- Enrichment of curriculum component for employability and entrepreneurship
- Alignment of curriculum component with research and innovation
- Relevance of the lab experiments in terms of real life application
- Alignment of curriculum to facilitate participation in competitions
- Alignment of curriculum for holistic development
- Striking a balance between theory and practical
- Offering of electives in relation to the technological advancements
- Sufficiency of design oriented courses
- Alignment of curriculum with the Vision and Mission of the Department
- Alignment of Curriculum to provide students with the education they need to achieve the POs at the time they graduate and the PEOs within several years.

### In your opinion,

1. What are the new courses that could be included in the curriculum?

S.No.	Name of Course	Reason
(i)		
(ii)		
(iii)		

2. What are the courses that could be removed from the curriculum?

S.No.	Name of Course	Reason
(i)		
(ii)		
(iii)		

3. What are the topics that could be included in the existing courses?

S.No.	Name of Course	Topics to be added	Reason
(i)			
(ii)			
(iii)			

4. What are the topics that could be removed from the existing courses?

S.No.	Name of Course	Topics to be removed	Reason
(i)			
(ii)			
(iii)			

5. Any other suggestions:

**Encl. 1:** Curriculum and Syllabi

**Encl. 2:** Department Vision, Department Mission, Programme Educational Objectives (PEOs) and Programme Outcomes (POs)

**CATEGORY:** Student/Alumni/Faculty/Employer

**NAME:**

**POSITION/TITLE:**

**OFFICIAL ADDRESS:**

**SIGNATURE**



**SETHU INSTITUTE OF TECHNOLOGY**  
**(An Autonomous Institution | Accredited by NAAC with 'A' Grade)**  
**PULLOOR, KARIAPATTI – 626 115**

**DEPARTMENT OF COMPUTER SCIENCE AND ENGINEERING**

**FEEDBACK ON CURRICULAR ASPECTS**

**SUGGESTION FORM - PARENT**

1	Do you think our Curriculum and Syllabus helped your wards to improve their knowledge Yes: <input type="checkbox"/> No: <input type="checkbox"/>
2	Do you think our Curriculum and Syllabus helped your wards to get placement Yes: <input type="checkbox"/> No: <input type="checkbox"/>
3	Do you think our Curriculum and Syllabus helped your wards to develop their communication and Interpersonal skills Yes: <input type="checkbox"/> No: <input type="checkbox"/>
4	Do you think our Curriculum and Syllabus helped your wards to improve their social responsibilities Yes: <input type="checkbox"/> No: <input type="checkbox"/>
5	Do you think our Curriculum and Syllabus helped your wards prepare GATE, Competitive Exams Yes: <input type="checkbox"/> No: <input type="checkbox"/>
6	Are you suggesting new courses to be included? If yes mention the name of the courses Yes: <input type="checkbox"/> No: <input type="checkbox"/> Name of the Courses:
7	Any other suggestions:
8	Name :  Educational Qualification:  Occupation details:  Ward Details:  <div style="text-align: right;">SIGNATURE</div>





# SETHU INSTITUTE OF TECHNOLOGY

Pulloor, Kariapatti – 626 115

(An Autonomous Institution | Accredited by **NAAC** with 'A' Grade)

(Approved by AICTE, New Delhi and affiliated to Anna University, Chennai)

## FEEDBACK ON CURRICULAR ASPECTS

### CURRICULUM EVALUATION FORM

S.No.	Question Text	Excellent	Very Good	Good	Satisfactory	Poor	If Satisfactory or Poor please offer suggestions
1.	Relevance of the courses in relation to the programme						
2.	Sufficiency of the courses related to industries that are relevant to the Industrial needs						
3.	Alignment of curriculum component with employability and entrepreneurship						
4.	Alignment of curriculum component with research and innovation						
5.	Relevance of the lab experiments in terms of real life application						
6.	Curriculum facilitating participation in competitions						
7.	Curriculum to facilitate holistic development						
8.	Balance between theory and practical						
9.	Offering of electives in relation to the technological advancements						
10.	Sufficiency of design oriented courses						

S.No.	Question Text	Excellent	Very Good	Good	Satisfactory	Poor	If Satisfactory or Poor please offer suggestions
11.	Alignment of curriculum with the Vision and Mission of the Department						
12.	Alignment of curriculum to provide the students with the education they need to achieve the POs at the time they graduate and the PEOs within several years						

***Please mark sections of the draft Curriculum / Syllabi***

- ❖ *That* need clarification
- ❖ Where content is confusing (or) incorrect
- ❖ Where content seems to be inconsistent in different sections

**Any other suggestions: Nil**

**Encl. 1:** Curriculum and Syllabi

**Encl. 2:** Department Vision, Department Mission, Programme Educational Objectives (PEOs) and Programme Outcomes (POs)

**CATEGORY: Alumni/Faculty/Employer**

**NAME:**

**POSITION/TITLE:**

**OFFICIAL ADDRESS:**

**SIGNATURE**